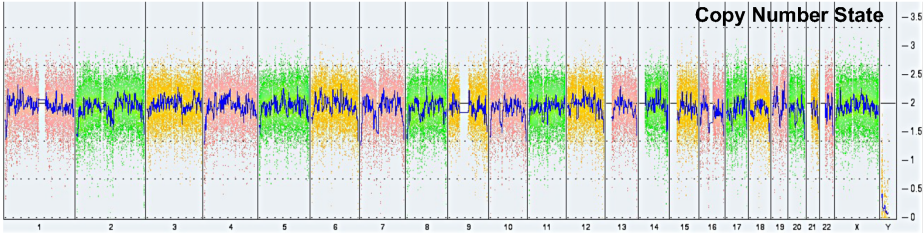


Supplemental Figure 3

a. iPSC^{CDH23}

- 1. KaryoStat™ analysis of KS-8261 revealed the sample originated from a female individual
- 2. No chromosomal aberrations were found when comparing against the reference dataset.



b. iPSC^{MEN1}

- 1. KaryoStat+ analysis of KS-11503 revealed the sample originated from a female individual
- 2. No chromosomal aberrations were found when comparing against the reference dataset.

